

NEW
NO TOUCH
technology



AF2 Professional Line
Washer disinfector for
human waste containers

Your Health, our Technology

AF2 PROFESSIONAL LINE

Professionalism guaranteed all over the world for more than 50 years

AT-OS, acknowledged as an international leader and EN ISO 13485 certified, designs, manufactures and distributes machines for washing and disinfecting human waste containers, such as bedpans, urinals, supports for disposable bedpans, commodes, kidneyshaped basins, bowls, urology bottles, bottles for blood collection and other containers used in hospitals, homes for the elderly, healthcare and clinics.



AT-OS products provide innovative technology in constant evolution.

The AF2 machines are produced in compliance with the **EC 93/42 EUROPEAN DIRECTIVE for class 2A medical devices** guaranteeing high quality and a high level of safety. Total compliance with the European standards regarding machines for washing and disinfection **EN15883 part 1 and part 3**.

The plumbing system is DVGW certified and isolates the drinking water pipeline system as prescribed by the **European Standard EN1717** in order to avoid any risk of contamination.

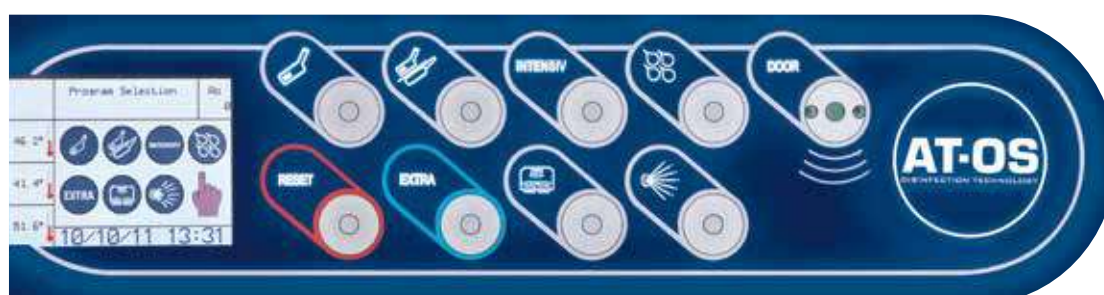


AT-OS machines are characterised by flexibility of use, customised programs based on operator needs and a digital warning system for routine maintenance.

AT-OS gives mindful and expert after-sales technical service, guaranteeing on-site intervention whenever necessary and scheduling training sessions for employees in the health sector, in order to guarantee the correct use of the machines.



AT-OS training centre



AF2-PL control panel

Contamination risk reduction

One of the biggest problems that has to be eliminated in hospitals is the transmission of infection from one patient to another due to poorly cleaned containers.

Hygiene, safety, total practicality and disinfection at high levels are the goals achieved by the entire range of AF2 machines that represent an high technological standard in the field.

Thanks to an innovative sensor placed on the control panel, the operations of closing and opening the door, emptying in the sealed chamber, washing and disinfection are performed completely automatically, eliminating any risk of contamination for both users and patients. **A single movement of the operator's hand is enough to safely start a washing cycle!**

A safety device ensures that the door remains closed during the disinfection phase, thus avoiding premature opening of the door and possible contamination.

Thanks to the AT-OS technology, during each thermal disinfection cycle the machine automatically calculates the disinfection value A_0 , which will never be higher than the one set by AT-OS, **to always guarantee a perfect disinfection!** This value is constantly updated during the cycle and monitored until the start of the following process.



Program and monitor your AT-OS machine via Windows PC, with **WinATOSMonitor** software or by installing the **AT-OS APP AF2** on Android tablets and smartphones.



AT-OS APP AF2

The user-friendly application for Android tablets and smartphones, connected to the machine via Bluetooth. Simplifies and speeds up machine monitoring and programming with PDF and EXCEL reports, that can be downloaded directly on your device.

DOWNLOAD NOW



High-Tech Features of the AF2 Professional Line



OPTIONAL



D.W.C. - Disinfected Water Cooling

Automated system for prompt disinfection of the water used in the final rinse to lower the washing chamber temperature before being flushed to ensure freedom from microbial contamination according to the standard EN ISO 15883-1 p. 5.3.2.5.



E.T.S. - Empty Total System

System to automatically drain water at the end of each cycle from the water pump, the water storage tank and the pipes in order to ensure freedom from microbial contamination inside the machine. According to the standard EN ISO 15883-1 5.3.2.1 & 5.5.1.1



S.D.S. (Self Disinfection System)

Function that allows the machine to automatically perform a disinfection program 24 hours after the last cycle. *This system prevents bacterial growth inside the machine.*



D.C.S. (Drain Control System)

Safety device that prevents the use of the machine if the drain trap is clogged.



HANDS FREE STARTING

The user can start the machine without removing his gloves by pushing buttons with his elbow. *This feature prevents cross infection.*



Automatic door opening

The operator opens and closes the door by pushing the foot pedal, placed on the bottom of the machine or by activating the optical sensor on the touch panel.



NO TOUCH TECHNOLOGY

Passing the hand, remotely, in front of the optical sensor, the operator can start the washing cycle. *Reset the problem of cross infection.*



D.V.S. (Disinfection Validation System)

3 PT1000 temperature probes in the washing chamber to ensure accurate disinfection monitoring.

Model with NO TOUCH optical sensor





High load capacity

Up to 4 urine bottles can be disinfected at once using device.



E.H.M.I. - Easy Human-Machine Interface

Graphic display for easy communication between machine and user. Top technology display to ensure detailed and clear information during operation and instructions in case of alarm.



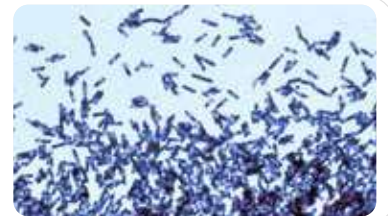
E.N.C. - Electronic Nozzles Control

Intelligent and optimised control of water flow, pressure and injection system to improve the washing performance.



HDS© - High disinfection system

Special ©AT-OS program with direct detergent spraying appliance and the possibility to set the cleaning action time of the detergent to increase the cleaning efficiency. Test approved by the University of Bonn (Germany).



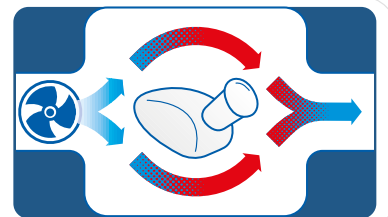
Aseptic technology

The new NO TOUCH optical sensor ensures total protection of surfaces and helps to stop the spread of viruses, counteracting the COVID-19. Thanks to the motion sensors the operators' hands will never come into contact with the machine, ensuring the highest standard of hygiene and the total absence of bacteria on the AT-OS machine surfaces.



A.C.S. - Air Cooling System

After the disinfection phase, cold air is introduced by a fan in the washing chamber, to lower the internal temperature and partially dry the disinfected containers. By condensing the excess steam, it prevents the AEROSOL effect for the operator and the thermodynamic contamination of the room.



Multiwasher Function

Complete application for washing and disinfecting other utensils and contain. *More details on page11*



AT-OS APP AF2 with Bluetooth application

The user-friendly application, for Android tablets and smartphones, simplifies and speeds up machine monitoring and programming with on-line improvement updates. The connection between AT-OS machines and Android device can be done without wires, requesting a bluetooth application.



The Professional Line product range

AF2-60



AF2.60P

Stand alone

Column floor mounted with plinth and wall or floor drain trap connection.

Thermal disinfection with built-in steam generator

► Dimensions

WxDxH: 600x450x1650 mm



AF2.60M

Wall-hung

Wall-hung, mounted with wall fixing support brackets and wall drain trap connection.

Thermal disinfection with built-in steam generator

► Dimensions

WxDxH: 600x450x1550 mm



AF2.60I

Wall built-in

Wall built-in with assembly frame and drain trap connection.

Thermal disinfection with built-in steam generator.

► Visible front dimensions

WxH: 720x1835 mm



AF2.60I/WC

Wall built-in with WC

Wall built-in with assembly frame, complete with fixing and rinsing device for the toilet and drain trap connection. Thermal disinfection with built-in steam generator.

► Visible front dimensions

WxH: 720x1835 mm

AF2-90



AF2.90B

Counter-top

Counter-top floor mounted with plinth and upper work top and wall or floor drain trap connection. Thermal disinfection with built-in steam generator.

► Dimensions

WxDxH: 900x600x1000 mm



AF2.90 970/860

Under-top

Under-top floor mounted with plinth to be placed under a work top and wall or floor drain trap connection. Thermal disinfection with built-in steam generator.

► Dimensions

WxDxH: 900x600x*970/860 mm



AF2.90L

Counter-top with sink

Counter-top with plinth, complete with upper work top with washbasin and wall or floor drain trap connection. Thermal disinfection with built-in steam generator.

► Dimensions

WxDxH: 920x600x1000 mm

*Machine available in two versions with different heights

DISINFECTING GROUPS



AF2.105P

Column stand alone

Column floor mounted, combined sluice unit, complete with slop-sink with plinth and wall or floor drain trap connection. Thermal disinfection with built-in steam generator.

► Dimensions

WxDxH: 1050x450x640(A)/1650(B) mm



AF2.105M

Wall-hung

Wall-hung, mounted, combined sluice unit, complete with slop-sink with wall fixing support brackets and wall drain trap connection. Thermal disinfection with built-in steam generator.

► Dimensions

WxDxH: 1050x450x540(A)/1550(B) mm



AF2.135B

Counter-top stand alone

Counter-top floor mounted combined sluice unit, complete with upper work top, slop-sink and plinth and wall or floor drain trap connection. Thermal disinfection with built-in steam generator.

► Dimensions

WxDxH: 1350x600x640(A)/1000(B) mm



AF2.135L

Counter-top stand alone with sink

Counter-top floor mounted combined sluice unit, complete with upper work top with washbasin, slop-sink and plinth and wall or floor drain trap connection. Thermal disinfection with built-in steam generator.

► Dimensions

WxDxH: 1350x600x640(A)/1000(B) mm



AF2.180B/V

Counter-top stand alone with sink and cabinet

Counter-top floor mounted combined sluice unit, complete with slop-sink and plinth, upper work top with basin and cabinet with 1 door and wall or floor drain trap connection. Thermal disinfection with built-in steam generator.

► Dimensions

WxDxH: 1800x600x640(A)/1000(B) mm



AF2.225L/W

Counter-top stand alone with double sink and cabinet

Combined sluice unit with slop-sink, with plinth, upper work top with 2 basin and cabinet with 2 doors and wall of floor drain trap connection. Thermal disinfection with built-in steam generator.

► Dimensions

WxDxH: 2250x600x640(A)/1000(B) mm

Opening and closing system

Manual version



◀

OPENING CLOSING START-UP

Version with automatic opening and elbow buttons for closing and starting



◀

OPENING WITH FOOT PEDAL OR OPTICAL SENSOR CLOSING AND STARTING WITH ELBOW BUTTON

Version with automatic opening and control panel for closing and start-up



◀

OPENING WITH FOOT PEDAL OR OPTICAL SENSOR CLOSING AND STARTING WITH TOUCH PANEL

NO TOUCH TECHNOLOGY version with opening/closing and no touch automatic start



◀

OPENING/CLOSING WITH OPTICAL SENSOR START-UP WITH OPTICAL SENSOR

Technical features

AF2 Professional Line

External Laboratory Certificate for validation of Type Test according to Standards EN ISO 15883-1/3.	Standard
DVGW certified plumbing system, designed to isolate the potable water pipeline system (water-gap) as prescribed by European Standard EN1717.	Standard
Manufactured in AISI 304 stainless steel brushed Scotch Brite finish.	Standard
Washing tank made of AISI 316 stainless steel (DIN 1.4404) with rounded corners and no welding.	Standard
USB port for connection to a PC and for software upgrades, statistical data on the last 10,000 cycles, technical operation check, disinfection monitoring during the operating cycle.	Standard
Complete with 4 washing programs: Reduced - Normal - Intensive - EXTRA.	Standard
Thermal disinfection with a built-in 3.2 kW steam generator complete with internal temperature control.	Standard
A ₀ value setting between 60 and 6000. The machine displays the A ₀ value reached and its calculation so that disinfection conditions according to EN ISO 15883-1/3.	Standard
PT1000 temperature sensor in the washing chamber.	Standard
Descaler liquid dosing pump with reserve warning, leak indicator and machine block in the event there is no more liquid.	Standard
Flow-meter to monitor the correct quantity of liquid used during operation (EN ISO 15883-1 p.5.7.1- 5.7.2).	Standard
NO TOUCH TECHNOLOGY	Optional
Dosing pump for liquid detergent with reserve warning, leak indicator and machine block in the event there is no more liquid.	Optional
Printer application on the front panel of the machine.	Optional
The following applications can be included: <ul style="list-style-type: none"> • AT-OS APP AF2: Bluetooth application for wireless communication between machine and Android devices; • WinATOSMonitor: USB application for uploading programs directly from a USB flash drive. 	Optional



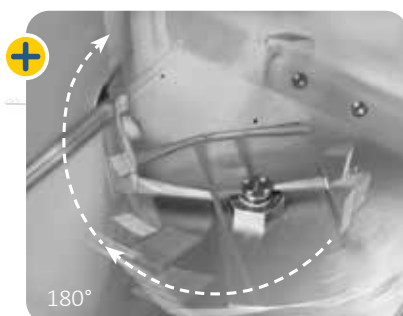
Support and accessories

Supports for bedpans and urinals

For washing of:

- ▶ Bedpan and urinal
- ▶ Commode and urinal
- ▶ Bedpan with cover and urinal
- ▶ Commode with cover and urinal

The urinals are emptied automatically when the door is closed. It is possible to disinfect up to 4 urinals per cycle.



AF2 60 PET automatic turning system for slipper bedpans ET Version

The patented AT-OS rotating support allows the operator to position the slipper bedpan with the handle towards the outside. At the start of the program the support will rotate 180°, allowing automatic drainage of organic waste without the help of the operator. Reduction of contamination risk is ensured

MULTIWASHER basket

This revolutionary AT-OS appliance makes it possible to use the washer disinfector as a multi-purpose piece of equipment to decontaminate general items in hospitals, clinics or homes for the elderly where standards of hygiene must comply with the most exigent principles of disinfection. The Multiwasher basket is suitable for any kind of accessory or container that does not have to be retreated in the sterilisation department

The use of this additional application in the Professional line washer disinfector allows:

- ▶ Washing by rotating spray arms (mechanical action), disinfection process enhanced by the use of detergent (chemical action) and thermal disinfection in less than 15 minutes.
- ▶ High disinfection for general medical utensils (not for use in the operating theatre)
- ▶ Thermal disinfection up to 95°C and $A_0=6000$ (in compliance with EN ISO 15883)
- ▶ Flexible and easy loading to treat a wide variety of devices



Special program for **MULTIWASHER function**
(this application can be installed afterwards)





Slop-sink range

Slop-sink with automated ring washing system and internal tank and pump



◀ Different dimensions:
width 45/60 cm



EMPTYING



FLUSHING

Slop-sink with automated ring washing system connected to the Professional line machine



◀ Different dimensions:
width 45/60 cm

Available for models:
AF2-60 | AF2-90



EMPTYING



FLUSHING

**RADIUS 15°
FINISHING**
AVAILABLE
ON REQUEST



Sluice room accessories

Stainless steel drip and storage shelves



**Wall mounted drip and storage shel
BEDPANS AND
URINALSI**



**Wall mounted drip and storage shel
URINALS**



**Wall mounted drip and storage shel
BEDPANS**



**WALL MOUNTED
STORAGE WITH
SHELVES**

Storage cabinets and work tops with basins



TOP CABINET IN STAINLESS STEEL

Closed with hinged door to be installed above the washing and disinfecting machine.



WALL CABINET IN STAINLESS STEEL

Stainless steel wall-hung cabinets open or with hinged doors. Internal heating available.



WORK TOP WITH BASIN

Stainless steel work tops with basins in customised dimensions. RADIUS 15° version available to prevent dirt deposits and to ease cleaning.

Other accessories

- ▶ Stand alone cabinetry and cupboards
- ▶ Stainless steel or CORIAN customised work tops
- ▶ Stainless steel covering and panelling
- ▶ Micro-controlled soap dispenser/mixer
- ▶ Manual or automatic photocell water taps

AT-OS also provides water softener and detergent liquids in 5 litre cans, tested and approved in compliance with EN ISO 15883-1/3 to ensure better cleaning and longer equipment life.



HOSPITAL

CSSD

RETIREMENT HOMES

DRYING CABINETS

DENTAL

LABORATORY

VETERINARY

FORNITURE



AT-OS SRL

Viale del Lavoro, 19- 37030 Colognola ai Colli

Verona- ITALY

Tel (+39) 045 6159411- Fax (+39) 045 6159422

info@at-os.com | www.at-os.com



CE 0123